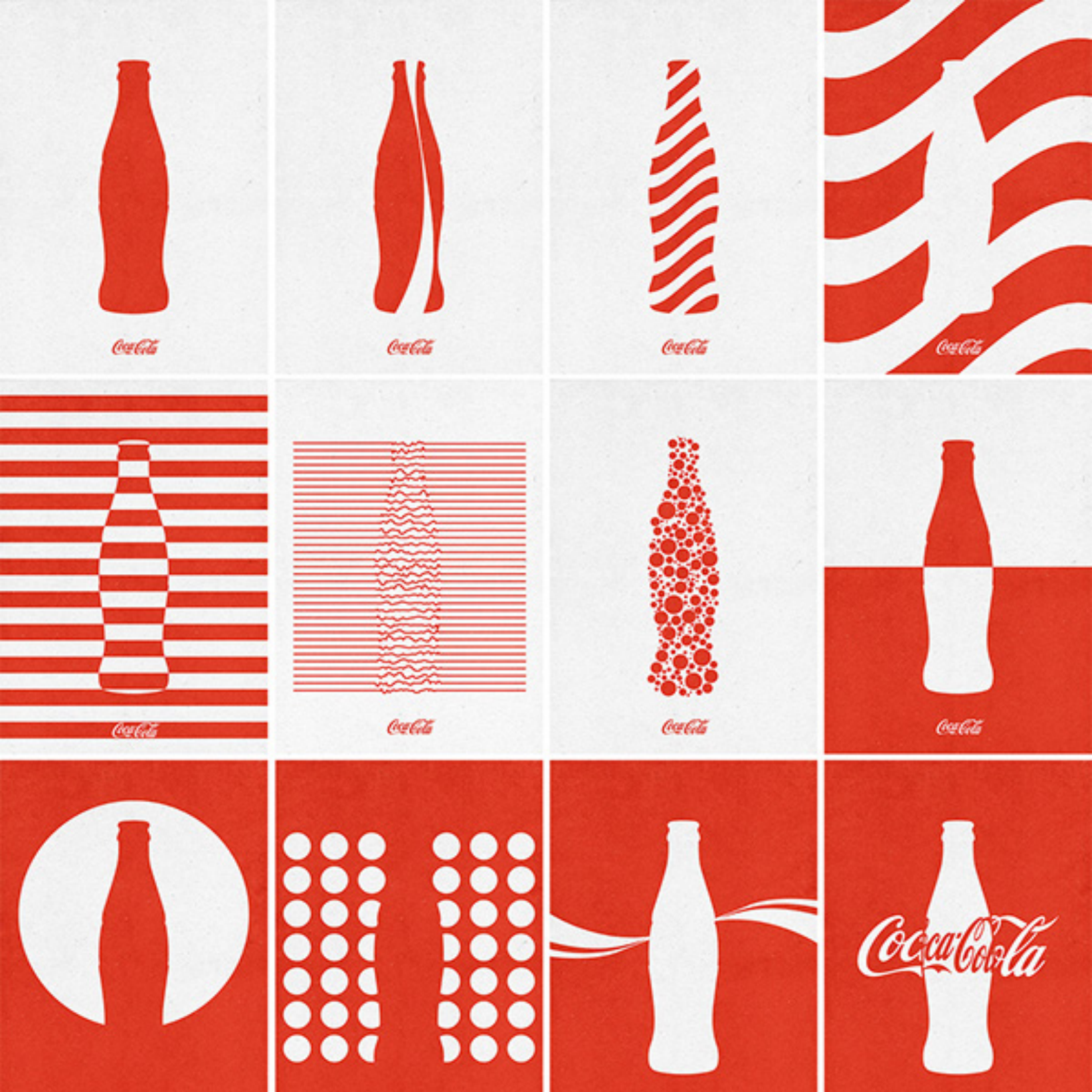


*Coca-Cola*®



The Brand	04
Visitor Experience	05-06
Color Palette	07
Elements	08
Wireframe Drawing	09-10
Sketch Up Renderings	11-12
Section Details	13-16
Colophon	17-18



“Together Tastes Better.”

Coca-Cola is a carbonated soft drink produced by The Coca-Cola Company. It originally marketed as a temperance drink and intended as a patent medicine, it was invented in the late 19th century by Dr. John Pemberton and purchased by businessman Asa Griggs Candler, whose marketing strategy allowed Coca-Cola to dominate the world soft-drink market throughout the 20th century. Coca-Cola’s current formula remains a trade secret.

Coca Cola is passionate about drinks in more than 200 countries, with more than 500 brands — from Coca-Cola, to Zico coconut water, to Costa coffee.



This Coca-Cola pop-up store offers a wide range of beverages developed by Coca-Cola for different tastes in different countries. It promotes new beverage products and showcases Coca-Cola’s history and unique aesthetic.

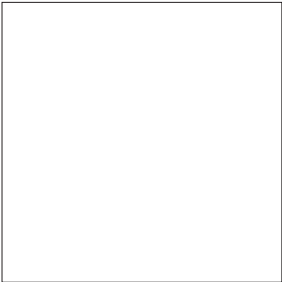
In this pop-up store, we have introduced some special entertainment facilities. Here you can experience Coca-Cola themed crane and egg twister and get limited edition goodies.





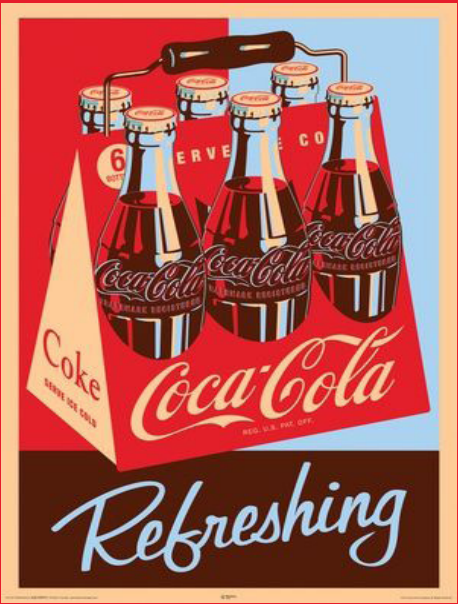
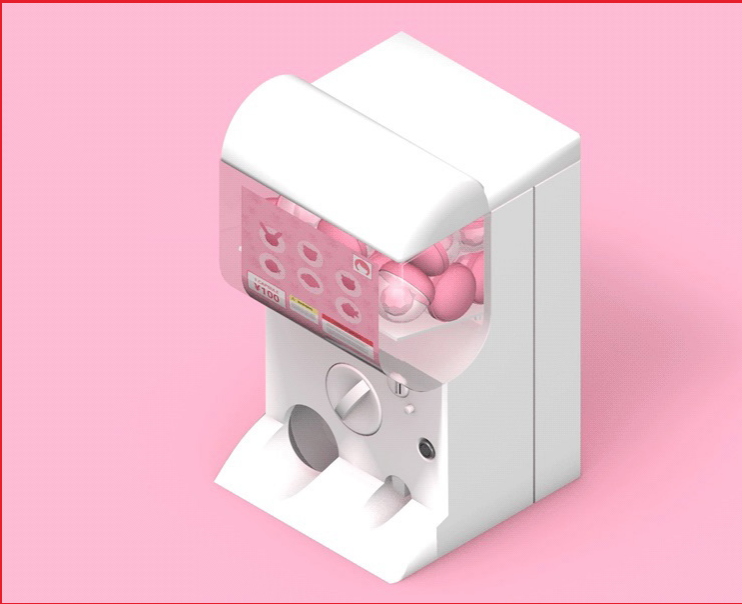
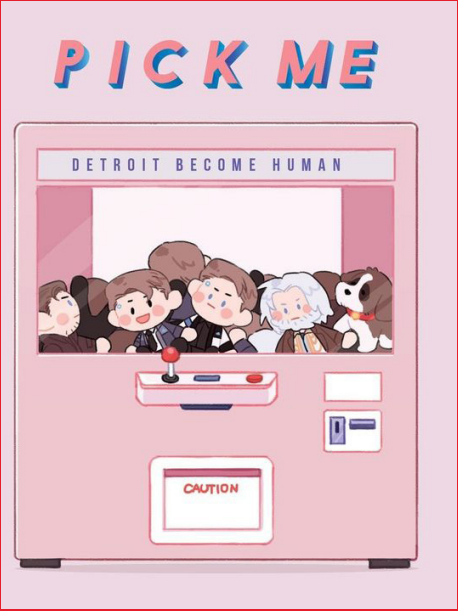
Coke Red

HEX: #F40009  
RGB: (244, 0, 0)  
CMYK: (4, 100, 95,0)

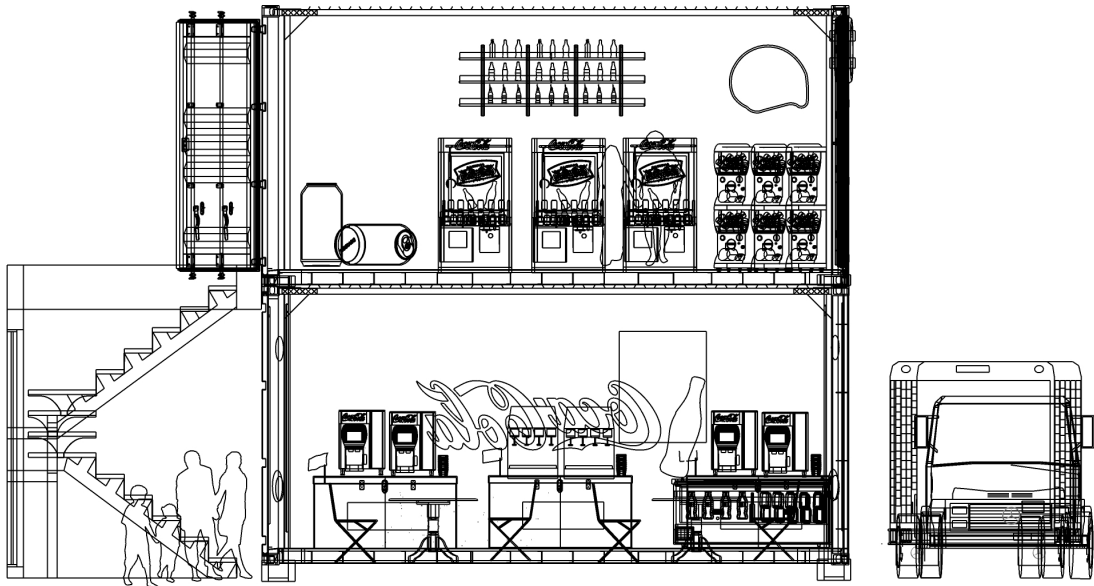


White

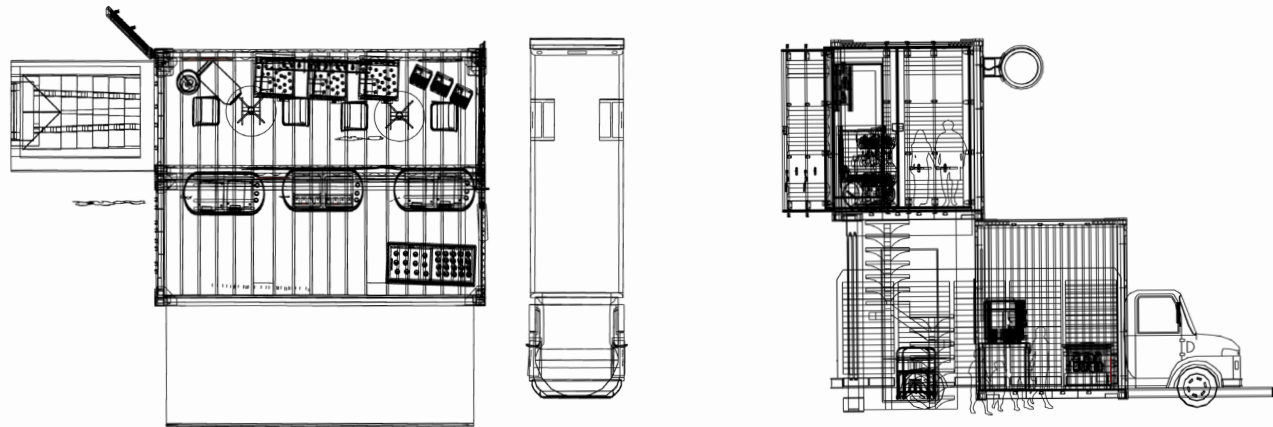
HEX: #FFFFFF  
RGB: (255, 255, 255)  
CMYK: (0, 0, 0, 0)





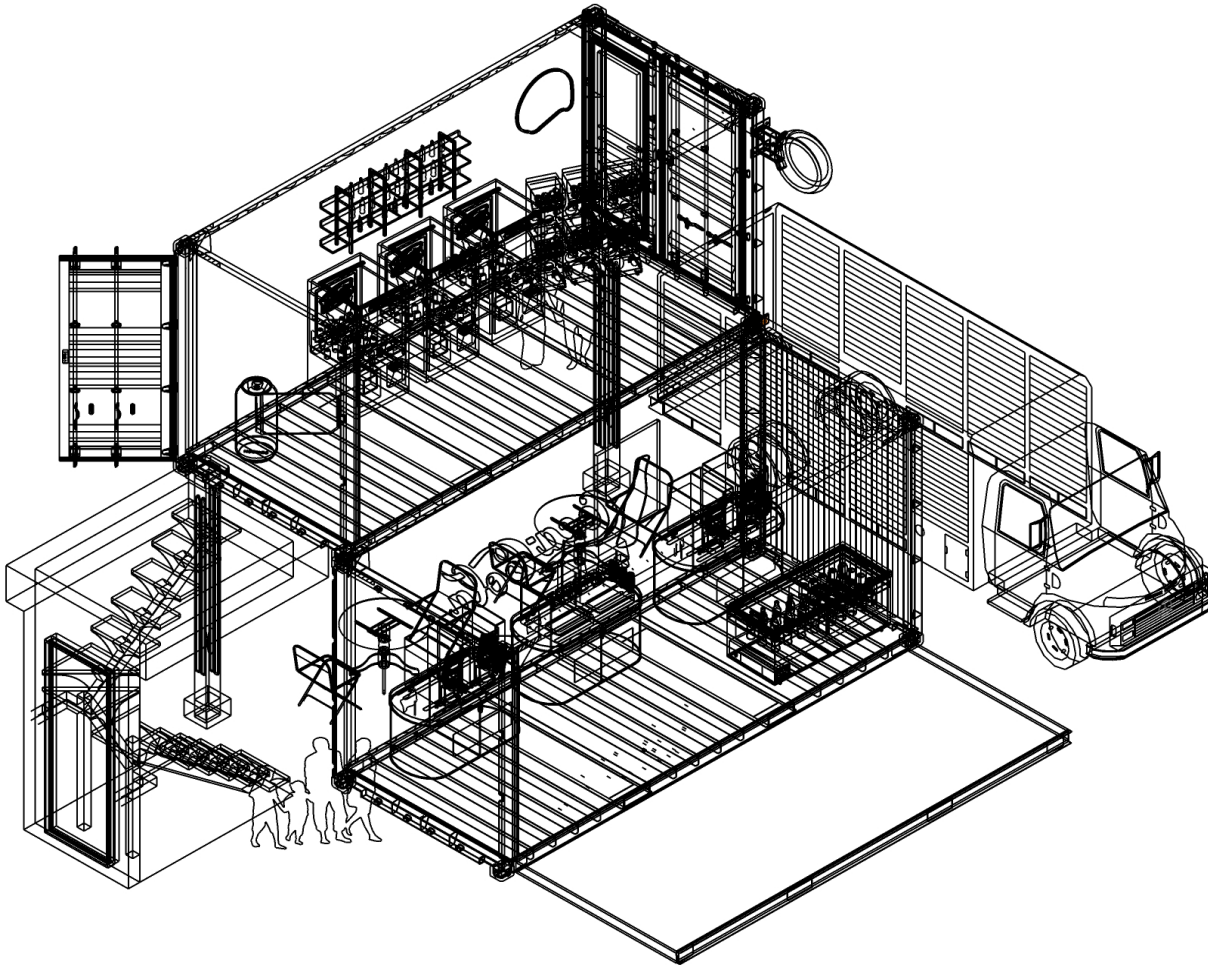


Front Elevation



Plain View

Side View



Isometric View

*Wireframe Drawing*



Front Elevation



Back View



Side View



Isometric View

*Sketch Up Rendering*





Section Details





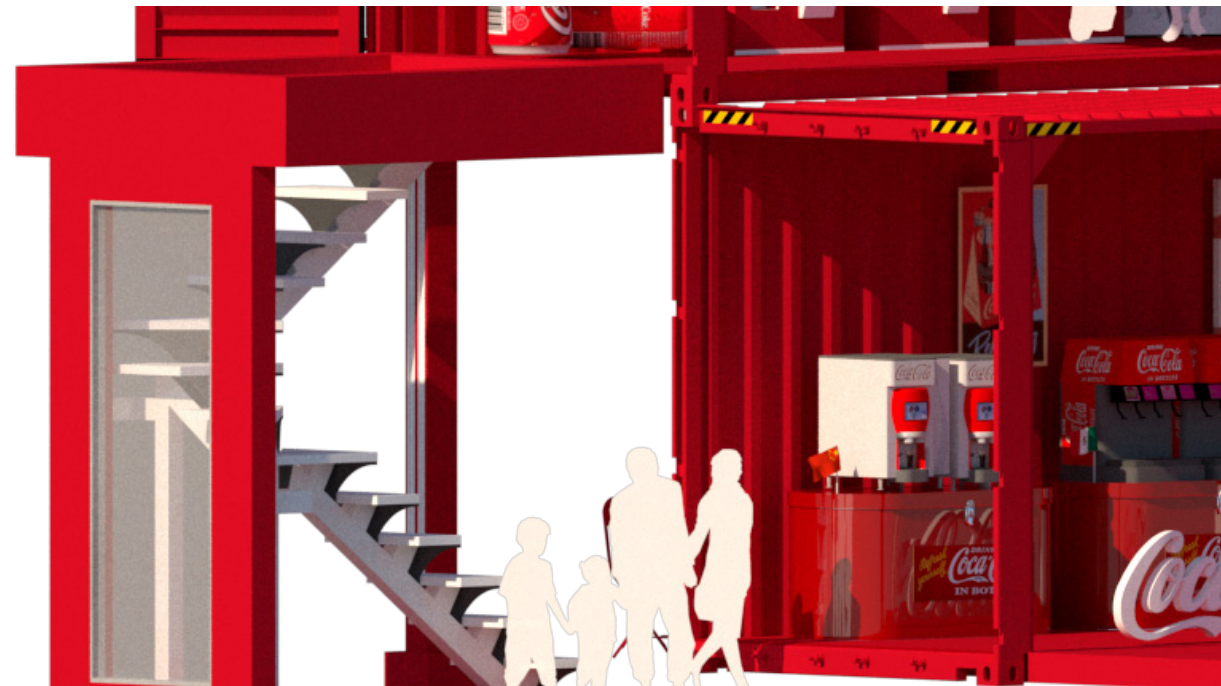
Coca Cola Pop-Up Store



15



Coca Cola Pop-Up Store



16



*Section Details*

Model Materials  
Metal, Glass, Plastic

Typeface  
Charter & Loki Cola

Software  
Sketch Up  
Adobe InDesign

“Together Tastes Better.”



Coca Cola Pop-Up Store

by

Tianran Yu (Tina)



